

It is a good time to be in forest research
because

It is a good time to be in forest research
because

we have lots of mega-problems that are
forest-related.

Arctic forest fires have produced mega-soot that darkened snow on Greenland.

ENVIRONMENT

→ Climate Change, Climate Desk, International, Top Stories

These Stunning Photos of Greenland's "Dark Snow" Should Worry You

When dust and soot turn Arctic ice and snow black, everything melts even faster.

—By **Eric Holthaus** | Fri Sep. 19, 2014 7:00 AM EDT

[f Like](#) [Share](#) [3k](#) [T](#) [Tweet](#) [247](#) [✉ Email](#) [147](#) [Print](#)

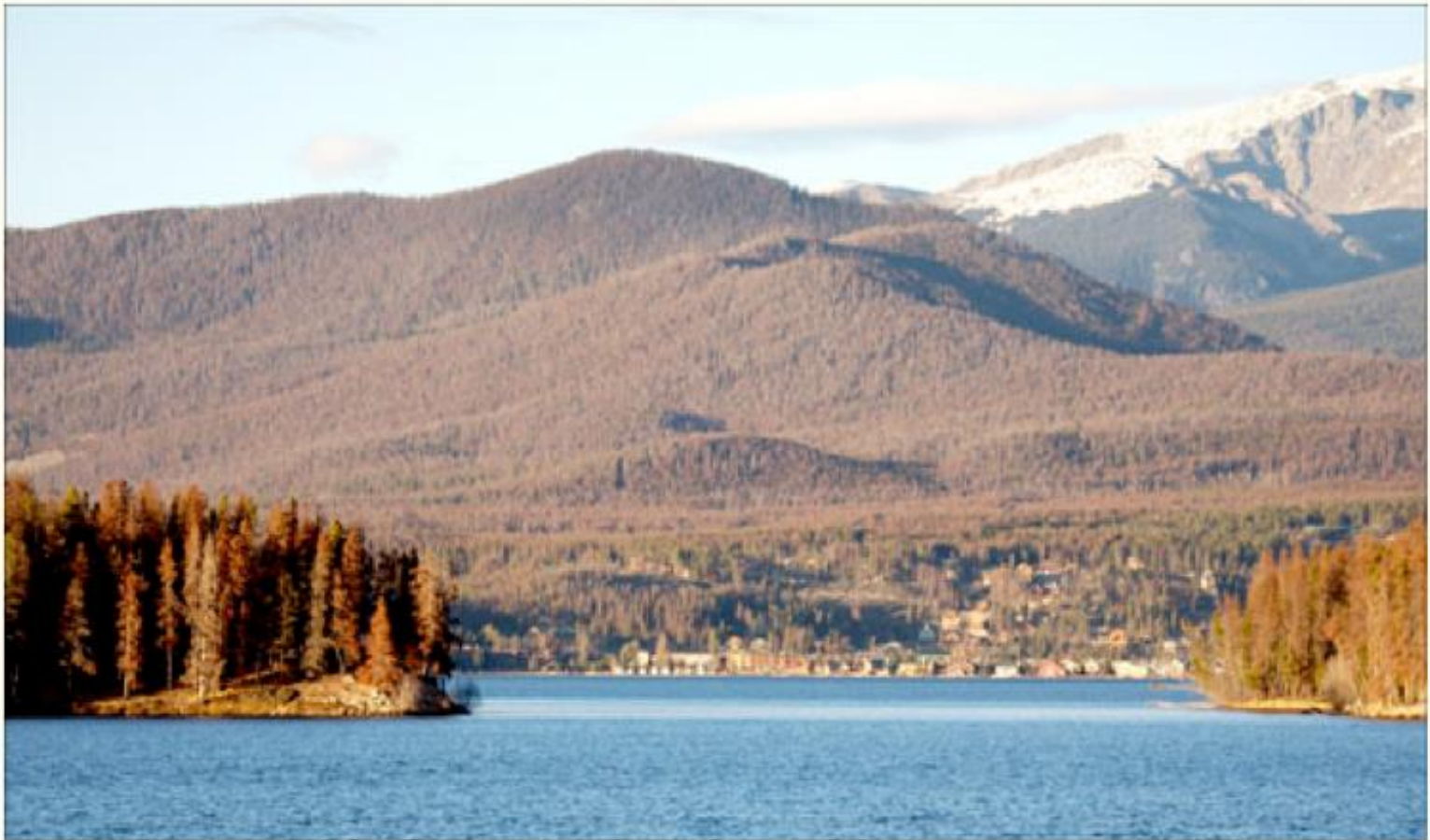


Isn't ice supposed to be white? *Jason Box*

This story originally appeared in [Slate](#) and is republished here as part of our [Climate Desk](#) collaboration.

Insect epidemics have killed millions of acres of forests in Western US.

More Than 4 Million Acres Impacted



Insect epidemics have killed billions of ash trees in Eastern US.



A 2011 photograph from Wisconsin shows what damage the larvae of the emerald ash borer are doing to ash trees in the United States. Image by John Ehlke/The West Bend Daily News, via Associated Press

Tropical forest felling and land use changes:



Dominica, West Indies, 1961



Loose talk on electronic media:

Report: Global Warming Not Causing More Wildfires

Steve Wilent

Is Climate Change Causing Tree Growth Increase?

European historic & recent forest growth records differ. Why?



[nature.com](#) > [journal home](#) > [current month](#) > [full text](#) > [figure 1](#)

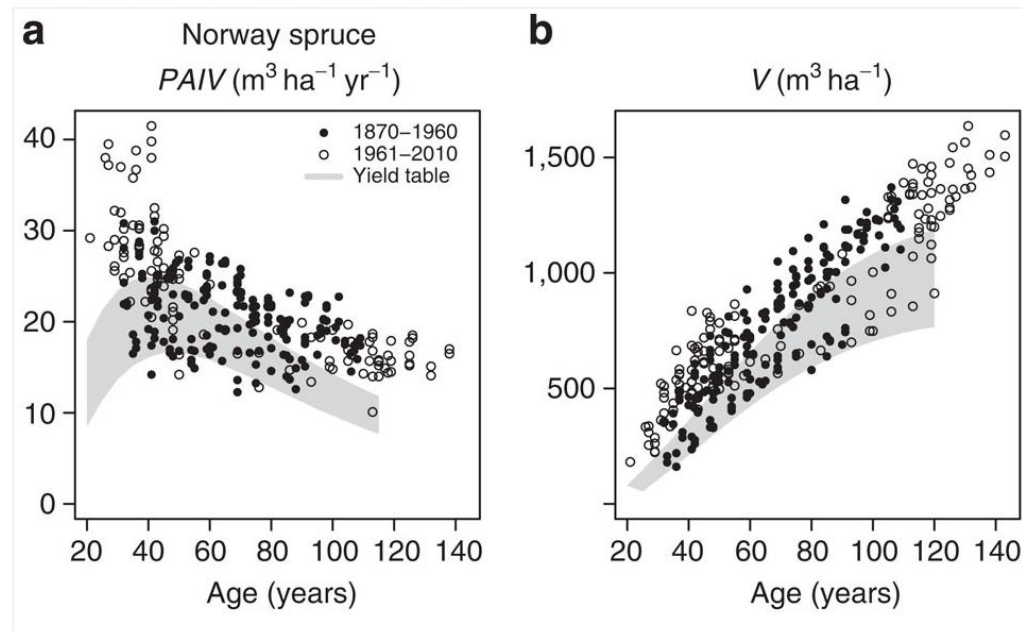
Figure 1: Observed versus expected stand growth for Norway spruce and European beech since 1870.

From

[Forest stand growth dynamics in Central Europe have accelerated since 1870](#)

[Hans Pretzsch](#), [Peter Biber](#), [Gerhard Schütze](#), [Enno Uhl](#) & [Thomas Rötzer](#)

Nature Communications 5, Article number: 4967 | doi:10.1038/ncomms5967



Many more 'stakeholders' in how forests are managed:

Challenge is to manage forests in ways that are:

- a) economically efficient,
- b) ecologically 'sound',
- c) socially responsible, and
- d) bioethical.¹

¹ Nature's complexity, scientific understanding, and informed forest management.
R. A. Leary. Paper delivered at 100 IUFRO anniversary. Berlin, 1990.

Forest research institutions – are expected to produce:

- a) better models,
- a) for more clients,
- a) more quickly,
- a) with fewer scientists,
- a) who are being paid less!!

You are needed !